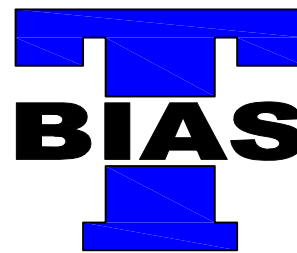
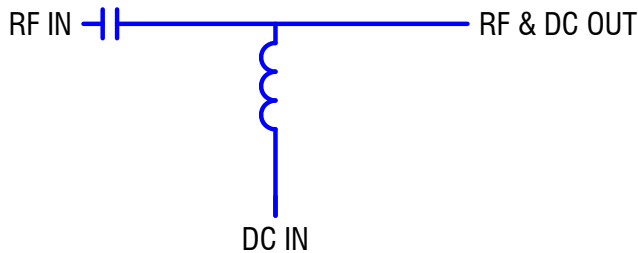
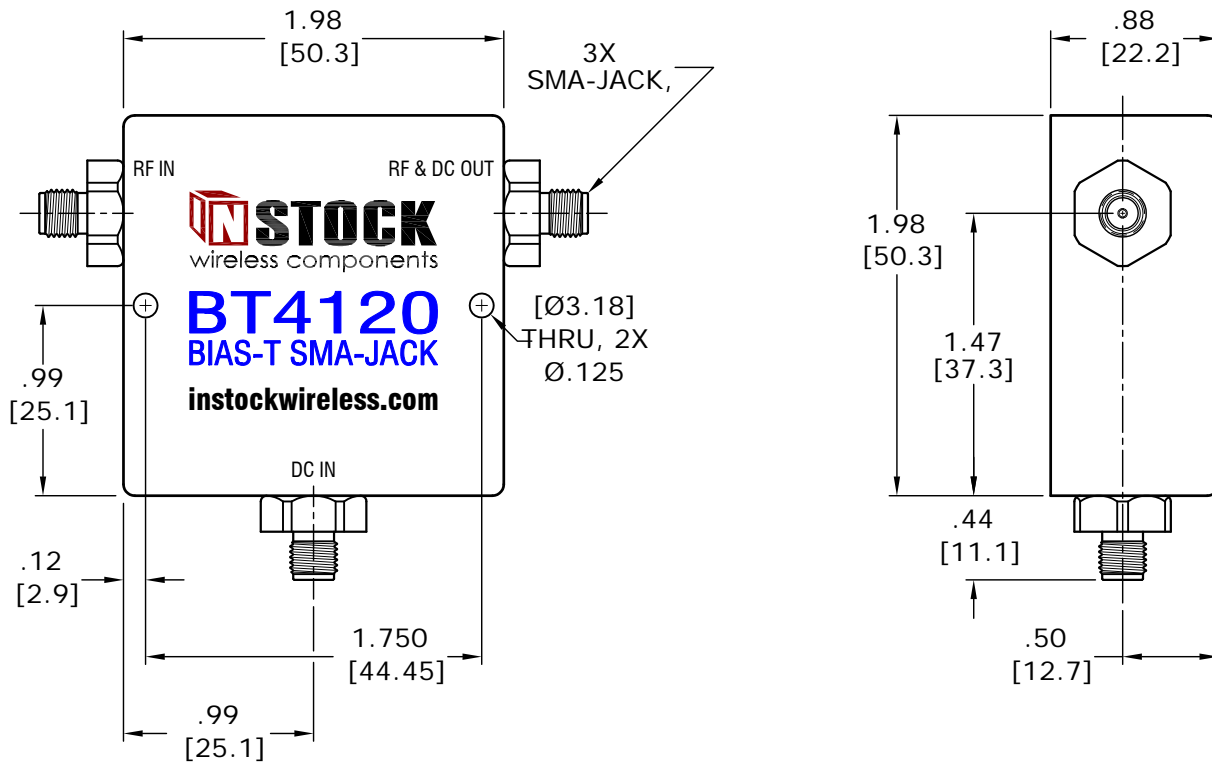


ELECTRICAL SPECIFICATIONS:

- 1.) FREQUENCY RANGE: 10 - 4000 MHz
- 2.) IMPEDANCE: 50 OHMS
- 3.) INSERTION LOSS (MAX): 0.3 dB
- 4.) VSWR (MAX): 1.20 : 1
- 5.) DC VOLTAGE (MAX): 100 V
- 6.) DC CURRENT (MAX): 1.5 A
- 7.) RF-DC ISOLATION (MIN): 40 dB
- 8.) RF INPUT POWER (MAX): 100W

MECHANICAL SPECIFICATIONS:

- 1.) CONNECTORS: SMA FEMALE (JACK), 50 OHM
- 2.) CONNECTOR BODY: BRASS, TRI-ALLOY PLATE
- 3.) CONNECTOR PIN: BERYLLIUM COPPER, GOLD PLATE
- 4.) INSULATOR: PTFE, VIRGIN ELECTRICAL GRADE
- 5.) HOUSING: ALUMINUM, CLEAR CHEM CONVERSION FILM, RoHS COMPLIANT (NO HEX CHROM)
- 6.) SOLDER: LEAD FREE, RoHS COMPLIANT
- 7.) OPERATING TEMP: -65°C TO +85°C
- 8.) WEIGHT: 133 GRAMS



Bias-tee, SMA, typically used for injecting DC current into RF transmission line.

| | | | | TOLERANCES | | MODEL NO. | |
|-----|-------------|----|------|-------------------------------|-------------|---|--|
| | | | | INCHES | MILLIMETERS | | |
| | | | | .00 = ±.01 | .0 = ±.25 | BT4120 | |
| | | | | .000 = ±.004 | .00 = ±.10 | | |
| | | | | DRAWN: TRD APPROVED: MJD | | TITLE BIAS-TEE, SMA-FEMALE (JACK), 10 - 4000 MHz, 100 VDC, 1.5A, 50 OHM, RoHS | |
| | | | | DATE: 12/02/16 DATE: 12/02/16 | | | |
| REV | DESCRIPTION | BY | DATE | www.instockwireless.com | | | |