

ELECTRICAL SPECIFICATIONS:

- 1.) FREQUENCY RANGE: 1000 - 2000 MHz
- 2.) IMPEDANCE: 50 OHMS
- 3.) INSERTION LOSS (MAX): 0.4 dB (ABOVE 3.01 dB SPLIT)
- 4.) AMPLITUDE BALANCE (MAX): 0.2 dB
- 5.) PHASE BALANCE (MAX): 3 DEGREES
- 6.) ISOLATION (MIN): 22 dB
- 7.) INPUT VSWR (MAX): 1.25 : 1
- 8.) OUTPUT VSWR (MAX): 1.20 : 1
- 9.) DC VOLTAGE (MAX): 10 V
- 10.) DC CURRENT (MAX): 50 mA

MECHANICAL SPECIFICATIONS:

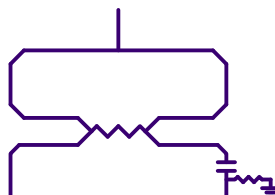
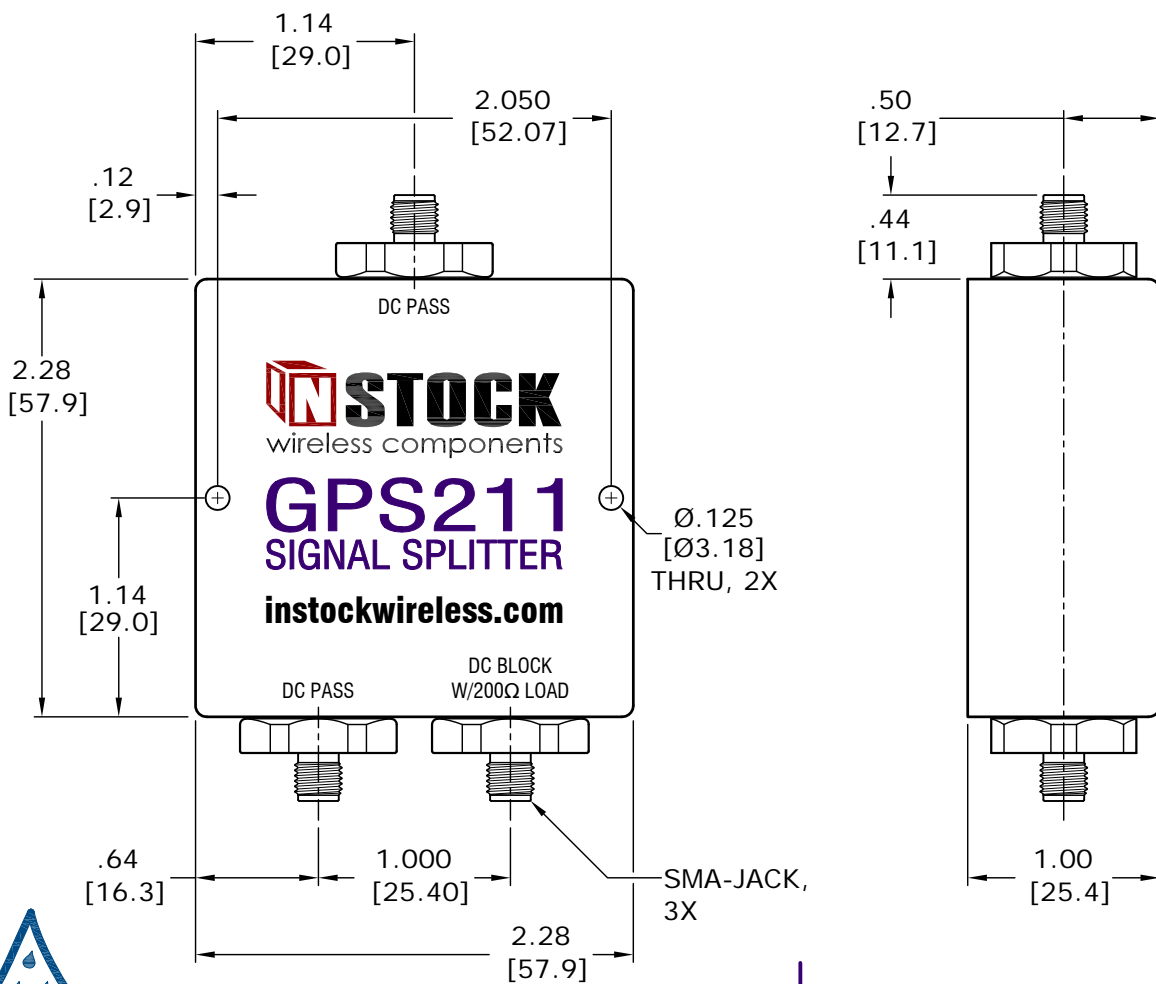
- 1.) CONNECTORS: SMA FEMALE (JACK), 50 OHM
- 2.) CONNECTOR BODY: BRASS, TRI-ALLOY PLATE
- 3.) CONNECTOR PIN: BERYLLIUM COPPER, GOLD PLATE
- 4.) INSULATOR: PTFE, VIRGIN ELECTRICAL GRADE
- 5.) HOUSING: ALUMINUM, CLEAR CHEM CONVERSION FILM, RoHS COMPLIANT (NO HEX CHROM)
- 6.) SOLDER: LEAD FREE, RoHS COMPLIANT
- 7.) PROTECTION RATING: IP67 WATER AND WEATHER RESISTANT
- 8.) OPERATING TEMP: -65°C TO +85°C
- 9.) WEIGHT: 258 GRAMS

GPS INPUT POWER RATING (GPS DIVIDER SPLITTER):

INTO MATCHED LOAD VSWR's	IN-PHASE	180° OUT-OF-PHASE
1.2 : 1	20 WATTS	20 WATTS
2.0 : 1	20 WATTS	5 WATTS
∞	10 WATTS	0.5 WATTS

GPS INPUT POWER RATING (GPS COMBINER):

COHERENT SIGNALS (IN-PHASE)	2 X 10 WATTS
COHERENT SIGNALS (180° OUT-OF-PHASE)	2 X 0.25 WATTS
NON-COHERENT SIGNALS	2 X 0.5 WATTS
OTHER CONDITIONS - CONSULT FACTORY	



2-way, passive GPS splitter; DC pass 1 port, DC block 1 port w/200Ω load. Typically used for powering an active antenna thru pass ports while splitting GPS signal 2 ways.

TOLERANCES	
INCHES	MILLIMETERS
.00 = ±.01	.0 = ±.25
.000 = ±.004	.00 = ±.10
DRAWN: MJD	APPROVED: EMM
DATE: 08/10/09	DATE: 08/10/09



MODEL NO.	GPS211
TITLE	GPS SPLITTER, PASSIVE, 2 WAY, SMA JACK, 1 - 2 GHz, 20 W, RoHS, IP67 WEATHERPROOF, DC BLOCK 1 PORT W / 200Ω INTERNAL LOAD

REV	DESCRIPTION	BY	DATE